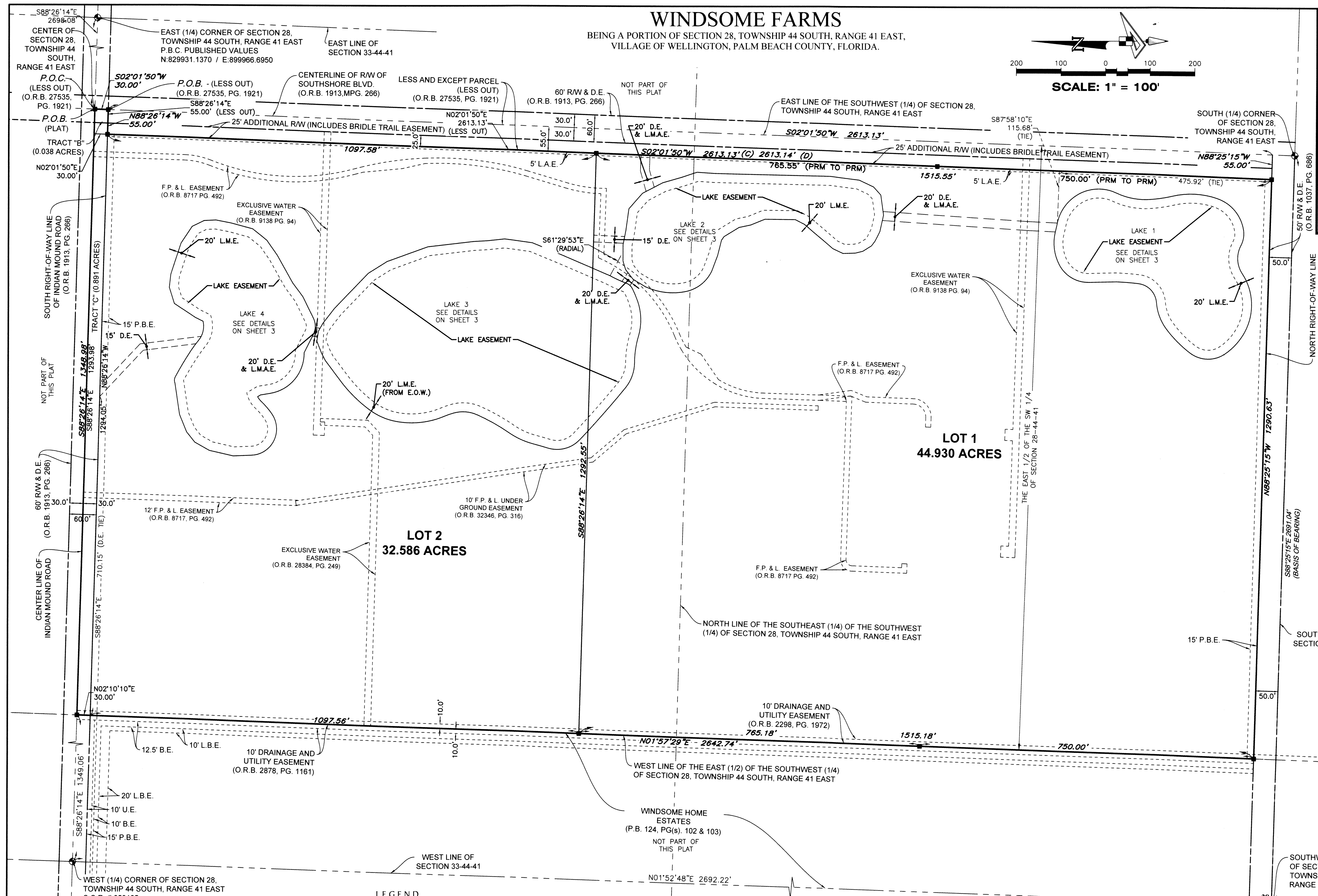
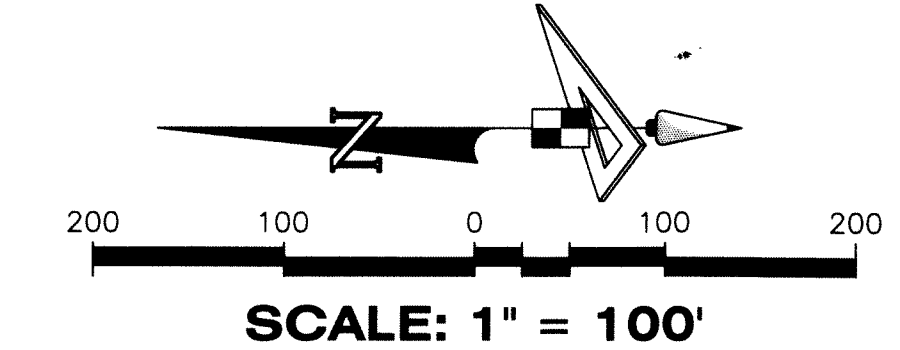


90

WINDSOME FARMS

BEING A PORTION OF SECTION 28, TOWNSHIP 44 SOUTH, RANGE 41 EAST,
VILLAGE OF WELLINGTON, PALM BEACH COUNTY, FLORIDA.



WEST (1/4) CORNER OF SECTION 28,
TOWNSHIP 44 SOUTH, RANGE 41 EAST
C.C.R. # 053105
N:830078.2970 / E:894572.6630

QUARTER (1/4) LINE
OF SECTION 29,
TOWNSHIP 44 SOUTH,
RANGE 41 EAST

LEGEND	
P.O.B.	POINT OF BEGINNING
P.O.C.	POINT OF COMMENCEMENT
P.B.	PLAT BOOK
D.B.	DEED BOOK
O.R./O.R.B.	OFFICIAL RECORDS BOOK
PG./PG(S)	PAGE(S)
R/W	RIGHT-OF-WAY
C.C.R.	CERTIFIED CORNER RECORD
P.B.C.	PALM BEACH COUNTY
L.E.	LAKE EASEMENT
L.M.E.	LAKE MAINTENANCE EASEMENT
L.A.E.	LIMITED ACCESS EASEMENT
(C)	CALCULATED
(D)	DEED
U.E.	UTILITY EASEMENT
D.E.	DRAINAGE EASEMENT
B.E.	PRIVATE BRIDLE EASEMENT
L.B.E.	LANDSCAPE BUFFER EASEMENT
L.M.A.E.	LAKE MAINTENANCE AND ACCESS EASEMENT
P.B.E.	PUBLIC BRIDLE EASEMENT
28-44-41	SECTION-TOWNSHIP-RANGE
PRM	PERMANENT REFERENCE MONUMENT
■	SET 4"x4" CONCRETE MONUMENT WITH 2" ALUMINUM DISK STAMPED "PRM LB 7768"

GeoPoint
Surveying, Inc.
4152 W. Blue Heron Blvd. Suite 105
Riviera Beach, FL 33404
Phone: (561) 444-2720
www.geopointsurvey.com
Licensed Business Number LB 7768
Sheet No. 2 of 3 Sheets

THIS NAME WINDSOME FARMS IS NOT A TRADE NAME. LAST SAVED BY LUIS ORTIZ ON 8/15/2022 4:31 PM